

Unmatched
Faculty

Unmatched
Management

Unmatched
Results

SAMPLE
TEST PAPER
VIII Class

i30 Learning
Centre

IIT-JEE • NEET • OLYMPIADS

Gudha Public School Campus, Delhi Sikar Bypass Raod, NEEEMKATHANA, RAJ.

M-97830 27772, 97830 27771, 97830 27778, 97830 27782

 i30nkt.gudhaeducationhub.com   [i30 learning Centre neemkathana](#)  [i30_gpsneemkathana](#)

CBSE Class 8 Science Sample Paper Set 4

Time Durations: 3hrs

Maximum Marks : 100

General Instructions :

- Read the question paper carefully.
- Draw neat and labelled diagrams wherever necessary
- Attempt the questions in serial order.

Q.1 Choose the correct option in each of the following. (1×6=6)

- Sperms collect and mature in the –
 - epididymis
 - vas deferens
 - scrotal sac
 - testes
- Which one of the following is a natural fibre?
 - polyester
 - nylon
 - cellulose
 - acrylic
- The electrode, connected to the negative terminal of a battery is -
 - anode
 - cathode
 - electrolyte
 - can't say
- When the angle between the two mirrors is 90° , the number of images formed will be -
 - 3
 - 2
 - 1
 - 5
- Natural gas is used to produce -
 - coke
 - carbon black
 - biodiesel
 - coal tar
- Which one of the following effects the ozone layer?
 - carbon dioxide
 - soot
 - CFCs
 - dust

Q.2 Complete the following sentences. (1×6=6)

- _____ is the stage of attaining sexual maturity in males and females.
- _____ fibres compete with wool.
- The main constituent of coal is _____.
- The kaleidoscope is a device that uses _____ to produce patterns.
- The process by which the carbon content of coal increases is called _____.
- Protecting wildlife in its natural surrounding is called _____ conservation.

Q.3 Answer the following in one word. (1×6=6)

- The process of formation of a polymer from its monomer _____.
- The gas collected over petroleum in a petroleum well _____.
- The most polluted river of the country _____.



- iv) The phenomenon of splitting of light into its component colours on refraction _____.
- v) Natural fountains of hot water and steam often used to generate electricity _____.
- vi) The plants / animals that do not belong to a place originally and are introduced from elsewhere _____.

Q.4 Give reasons for the following. (any three) (2×3=6)

- i) Acrylics are not spun from the melt.
- ii) A log of wood takes longer time to start burning than the wood shavings.
- iii) Metals are good conductor of heat.
- iv) The image formed on a metal surface is hazy as compared to the image formed on a mirror.

Q.5 Define the following terms (any five). (2×5=10)

- i) Asexual reproduction
- ii) Foeticide
- iii) Electrolyte
- iv) Accomodation
- v) Biomass energy
- vi) Endangered species
- vii) Ignition temperature

Q.6 Draw and label of the following (any two). (3×2=6)

- i) Female reproductive system
- ii) Electroplating of spoon with silver
- iii) Operations at waterworks / large scale purification of water.
- iv) Fractional distillation of petroleum.

Q.7 Answer the following in not more than 20 words. (any six) (2×6=12)

- i) Write any two advantages and two disadvantages of synthetic fibres.
- ii) What is an ion ? Give two examples of it.
- iii) What is lateral inversion?
- iv) Name any four alternative sources of energy that can be used for the generation of electricity.
- v) What is potable water? Write any two properties of it.
- vi) What does 'sustainable utilization' of natural resources mean?
- vii) What is wildlife? What to you understand by Joint Forest Management?
- viii) Why are coal, petroleum and natural gas called fossil fuel?

Q.8 Answer the following in not more than 40 words. (any six) (3×6=18)

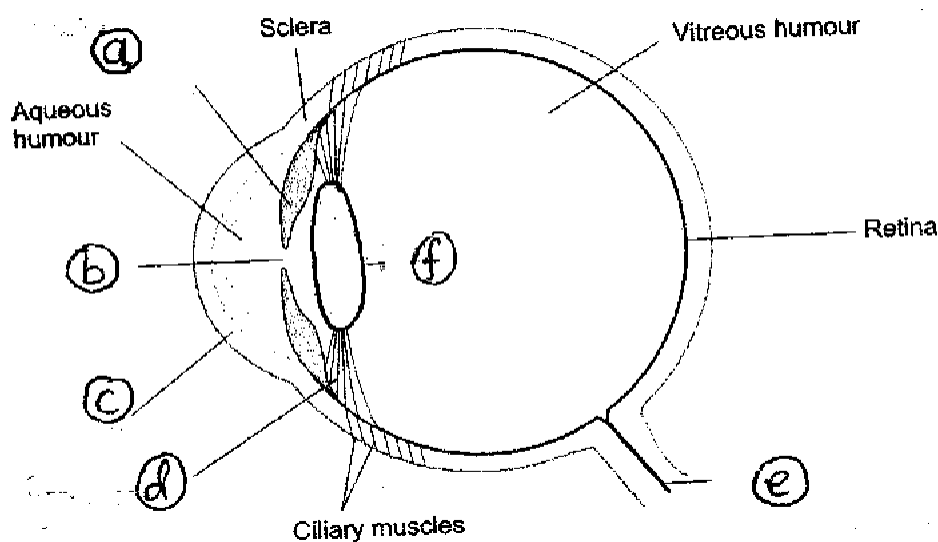
- i) How are twins born?
- ii) What is biogas and how does it burn?
- iii) What happens when voltage is applied across electrodes placed in an electrolyte?
- iv) What do you understand by the blind spot of the eye?

- v) Describe any three methods of preventing water pollution.
- vi) Name three special projects launched to protect (particular) endangered animals in India. Write their locations (states) too.
- vii) What is monoculture? What is the danger linked to this practice?

Q.9 Answer the following in not more than 100 words. (any five) (5×5=25)

- i) How is the sex of a foetus determined? Why is it prohibited by law?
- ii) Write any five factors which should be considered while choosing a fuel.
- iii) What is Electrolysis? Explain the process of electrolysis of water using chemical equations.
- iv) a) State the laws of reflection.
b) Mention any three vision related problems and their possible causes.
- v) a) Describe Eutrophication.
b) What is acid rain? Mention any two effects of it.
- vi) What are secondary sexual characters? Mention the male and female secondary sexual characters in human being.

Q.10 Carefully observe the diagram given below and answer the following questions.



HUMAN EYE

- a) Label the given points (a, b, c, d, e, f) of the diagram. (3)
- b) Name the protective membrane of eye which covers most of the eye ball. (1)
- c) What is the function of 'suspensory ligament'? (1)